

CYGNAL

Survey of Likely General Election Voters

National

Conducted October 3 – 4, 2023

n=2000 | $\pm 2.16\%$

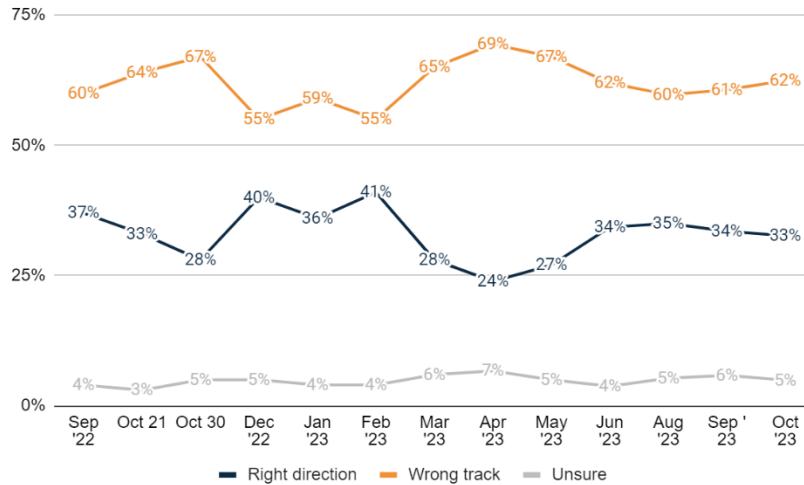
Vote Method

- How do you plan to vote in the 2024 general election for President, Congress, and state offices?

	Freq.	%
<u>Vote in-person on Election Day</u>	1032	51.6%
Definitely vote in-person on Election Day	780	39.0%
Probably vote in-person on Election Day	252	12.6%
<u>Vote absentee by mail</u>	500	25.0%
Definitely vote absentee by mail	333	16.7%
Probably vote absentee by mail	166	8.3%
<u>Vote early in-person</u>	468	23.4%
Definitely vote early in-person	252	12.6%
Probably vote early in-person	216	10.8%
I do not plan to vote in the 2024 general election	0	0.0%
Unsure	0	0.0%
Total	2000	100.0%

US Direction

- Generally speaking, would you say things in the United States are headed in the right direction or off on the wrong track?



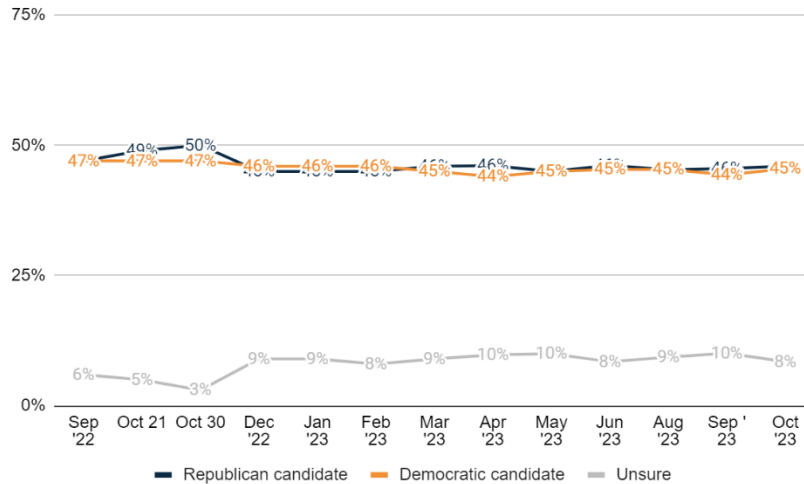
	Oct '23	Sep '23	Aug '23	Jun '23
<u>Right direction</u>	32.7%	33.5%	35.0%	34.3%
Definitely the right direction	11.6%	13.8%	13.4%	13.1%
Mostly the right direction	21.1%	19.7%	21.6%	21.2%
<u>Wrong track</u>	62.4%	60.7%	59.7%	62.0%



Mostly the wrong track	24.5%	22.9%	25.1%	24.8%
Definitely the wrong track	37.9%	37.7%	34.6%	37.2%
Unsure	4.9%	5.8%	5.3%	3.8%
Total	100.0%	100.0%	100.0%	100.0%

Generic Ballot

3. If the 2024 general election was held today, and you had to make a choice, would you vote for the Republican or Democratic candidate for U.S. Congress?



	Oct '23	Sep '23	Aug '23	Jun '23
<u>Republican candidate</u>	<u>46.0%</u>	<u>45.6%</u>	<u>45.3%</u>	<u>46.2%</u>
Definitely the Republican candidate	32.9%	33.2%	32.1%	33.8%
Probably the Republican candidate	13.1%	12.3%	13.2%	12.4%
<u>Democratic candidate</u>	<u>45.5%</u>	<u>44.3%</u>	<u>45.4%</u>	<u>45.4%</u>
Probably the Democratic candidate	13.1%	11.1%	12.5%	12.6%
Definitely the Democratic candidate	32.4%	33.2%	32.9%	32.8%
Unsure	8.5%	10.1%	9.3%	8.5%
Total	100.0%	100.0%	100.0%	100.0%

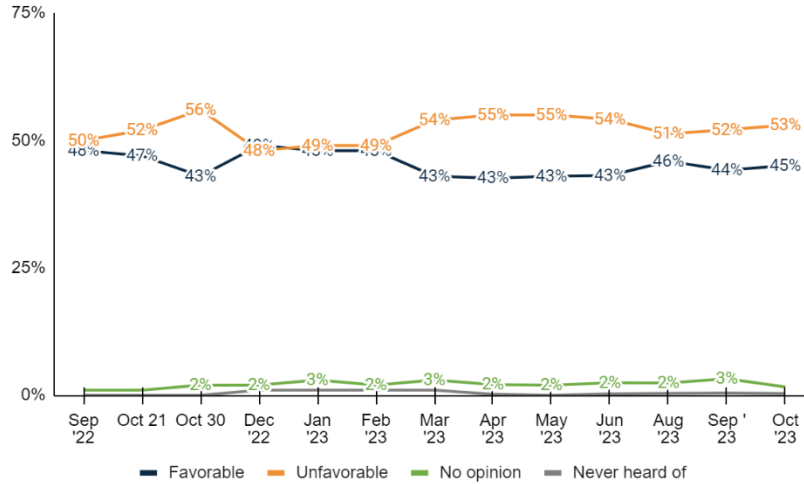
The following is a list of names of various people or entities who may have been mentioned in the news recently. For each one, please indicate if you have heard of the person or entity and if you have, whether you have a favorable or unfavorable opinion of them. If you haven't heard of a name, choose so.

4. Joe Biden

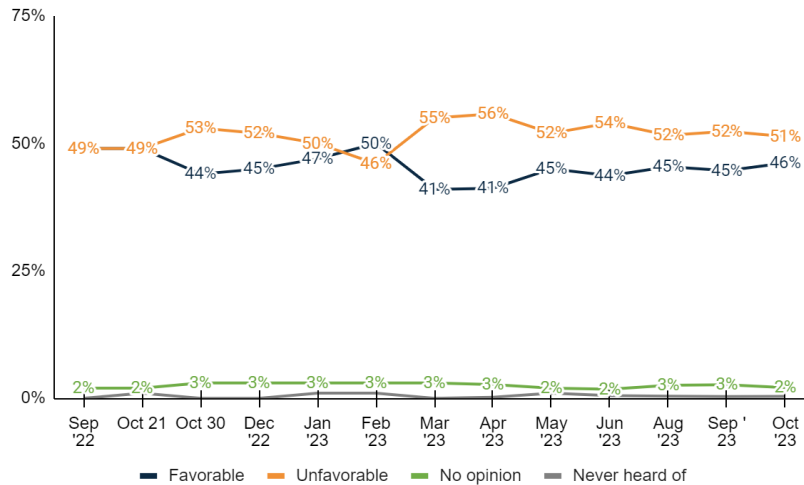
	Oct '23	Sep '23	Aug '23	Jun '23
<u>Favorable</u>	<u>45.0%</u>	<u>44.2%</u>	<u>45.9%</u>	<u>43.1%</u>
Very favorable	24.6%	25.2%	25.3%	23.8%



Somewhat favorable	20.4%	19.0%	20.7%	19.3%
Unfavorable	53.0%	52.1%	51.3%	54.2%
Somewhat unfavorable	11.7%	11.1%	12.4%	11.7%
Very unfavorable	41.3%	41.0%	38.9%	42.4%
No opinion	1.6%	3.3%	2.4%	2.4%
Never heard of	0.3%	0.4%	0.4%	0.3%
Total	100.0%	100.0%	100.0%	100.0%



5. Donald Trump



	Oct '23	Sep '23	Aug '23	Jun '23
Favorable	46.2%	44.7%	45.4%	43.7%
Very favorable	30.6%	27.9%	28.6%	27.4%
Somewhat favorable	15.6%	16.7%	16.8%	16.3%
Unfavorable	51.4%	52.4%	51.6%	54.0%
Somewhat unfavorable	8.7%	9.2%	9.5%	10.5%



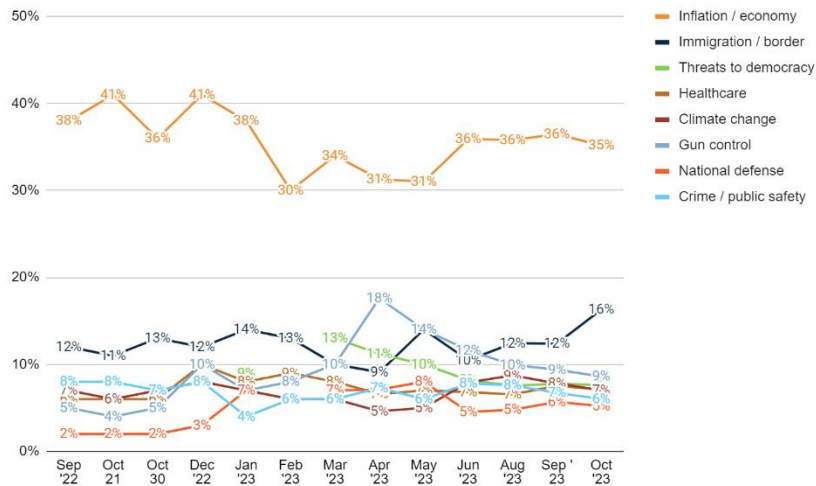
Very unfavorable	42.7%	43.2%	42.1%	43.5%
No opinion	2.1%	2.7%	2.5%	1.8%
Never heard of	0.4%	0.3%	0.4%	0.5%
Total	100.0%	100.0%	100.0%	100.0%

6. United Auto Workers (UAW)

	Freq.	%
Favorable	1026	51.3%
Very favorable	475	23.7%
Somewhat favorable	551	27.5%
Unfavorable	454	22.7%
Somewhat unfavorable	248	12.4%
Very unfavorable	206	10.3%
No opinion	387	19.3%
Never heard of	133	6.7%
Total	2000	100.0%

Top Priority

7. Which one of the following issues do you believe should be the top priority for Congress?



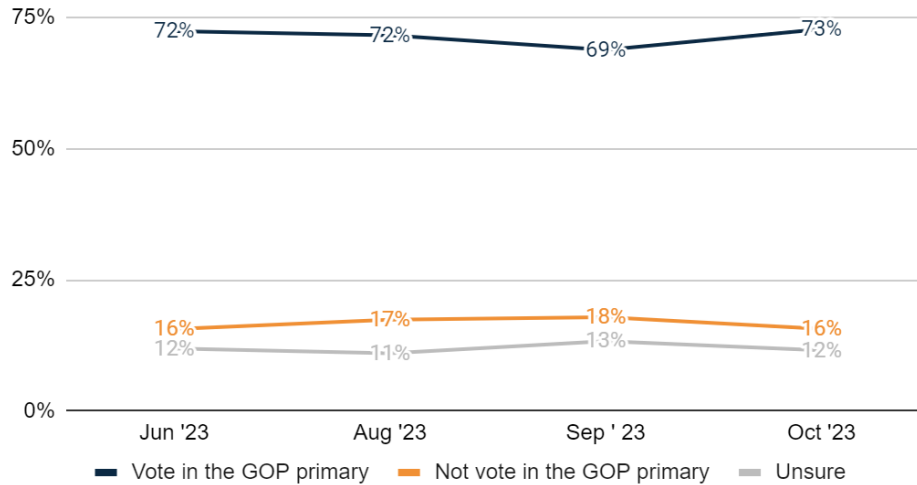
	Oct '23	Sep '23	Aug '23	Jun '23
National security	5.2%	5.7%	4.8%	4.5%
Inflation and economy	35.2%	36.5%	35.8%	35.9%
Climate change	7.0%	7.8%	8.7%	7.9%
Abortion	4.4%	4.4%	4.0%	4.9%
Crime and public safety	6.0%	6.7%	7.6%	7.8%
Threats to democracy	7.6%	7.8%	7.5%	8.2%
Gun control	8.6%	9.4%	9.9%	11.6%



Illegal immigration	16.3%	12.4%	12.4%	10.5%
Healthcare	7.1%	7.5%	6.5%	6.8%
Unsure	2.5%	1.9%	2.6%	1.8%
Total	100.0%	100.0%	100.0%	100.0%

GOP Prez Primary Screener

8. Do you plan to vote in the 2024 Republican primary election for President?



	Oct '23	Sep '23	Aug '23	Jun '23
<u>Vote in the GOP primary</u>	<u>72.8%</u>	<u>68.8%</u>	<u>71.6%</u>	<u>72.4%</u>
Definitely vote in the GOP primary	52.7%	52.2%	55.1%	54.0%
Probably vote in the GOP primary	20.0%	16.6%	16.5%	18.4%
<u>Not vote in the GOP primary</u>	<u>15.7%</u>	<u>17.9%</u>	<u>17.4%</u>	<u>15.6%</u>
Probably not vote in the GOP primary	5.8%	7.2%	7.2%	6.7%
Definitely not vote in the GOP primary	9.9%	10.7%	10.3%	8.9%
Unsure	11.5%	13.3%	11.0%	11.9%
Total	100.0%	100.0%	100.0%	100.0%

GOP Prez Primary Ballot

9. If the 2024 Republican primary election for President was held today, and you had to vote for one of these candidates, who would you vote for?

	Oct '23	Sep '23	Aug '23	Jun '23
Ron DeSantis	8.7%	11.5%	10.4%	16.1%
Nikki Haley	4.6%	3.6%	2.8%	3.8%
Mike Pence	4.7%	4.5%	6.6%	5.1%
Vivek Ramaswamy	9.7%	9.8%	11.4%	3.7%
Tim Scott	1.7%	1.7%	3.2%	4.2%
Chris Christie	3.9%	1.7%	2.1%	2.3%



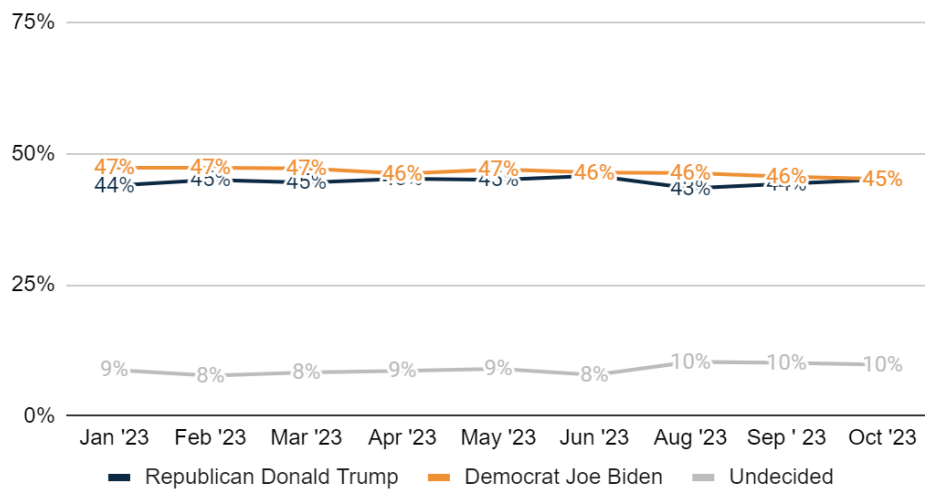
Donald Trump	57.8%	59.2%	53.3%	51.3%
Asa Hutchinson	0.6%	0.7%	0.3%	0.6%
Doug Burgum	0.7%	0.2%	0.2%	0.4%
Francis Suarez	-	-	0.6%	0.2%
Larry Elder	0.0%	0.2%	0.2%	0.5%
Perry Johnson	0.7%	0.0%	0.0%	0.5%
Ryan Binkley	0.0%	0.4%	0.2%	0.5%
Undecided	6.9%	6.4%	8.8%	10.9%
Total	100.0%	100.0%	100.0%	100.0%

Thinking about the general election for President in 2024...

Biden v Trump

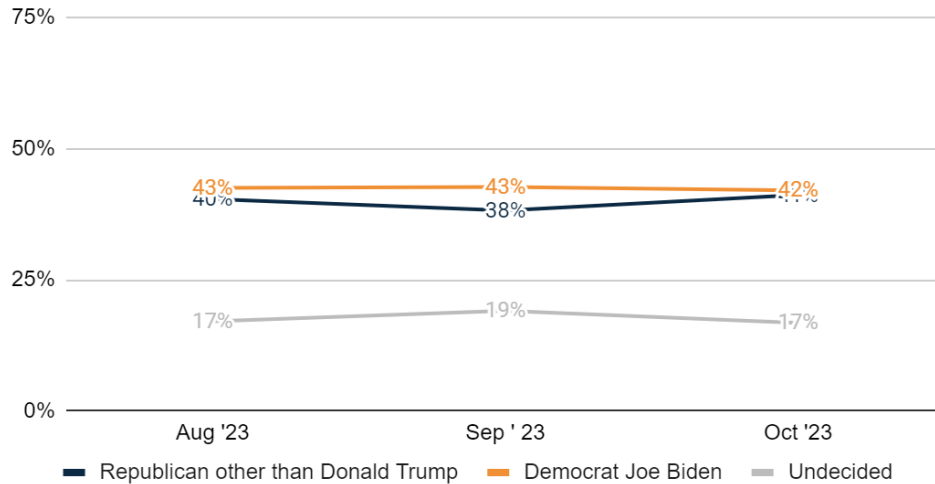
10. If the 2024 general election for President was held today, and you had to make a choice based on these options, who would you vote for?

	Oct '23	Sep '23	Aug '23
<u>Democrat Joe Biden</u>	<u>45.2%</u>	<u>45.6%</u>	<u>46.3%</u>
Definitely Democrat Joe Biden	33.0%	36.2%	34.9%
Probably Democrat Joe Biden	12.1%	9.3%	11.4%
<u>Republican Donald Trump</u>	<u>45.1%</u>	<u>44.3%</u>	<u>43.4%</u>
Probably Republican Donald Trump	11.4%	10.6%	11.7%
Definitely Republican Donald Trump	33.7%	33.7%	31.7%
Undecided	9.8%	10.1%	10.3%
Total	100.0%	100.0%	100.0%



Biden v Non-Trump R

11. If the 2024 general election for President was held today, and you had to make a choice based on these options, who would you vote for?



	Oct '23	Sep '23	Aug '23
<u>Democrat Joe Biden</u>	<u>42.0%</u>	<u>42.7%</u>	<u>42.5%</u>
Definitely Democrat Joe Biden	29.0%	30.7%	30.2%
Probably Democrat Joe Biden	13.1%	11.9%	12.3%
<u>Republican other than Donald Trump</u>	<u>41.2%</u>	<u>38.2%</u>	<u>40.4%</u>
Probably a Republican other than Donald Trump	19.5%	17.1%	19.2%
Definitely a Republican other than Donald Trump	21.7%	21.2%	21.3%
Undecided	16.8%	19.1%	17.1%
Total	100.0%	100.0%	100.0%

Kennedy Independent

12. If the 2024 general election for President was held today, and you had to make a choice based on these options, who would you vote for?

	Freq.	%
<u>Republican Donald Trump</u>	<u>793</u>	<u>39.6%</u>
Definitely Republican Donald Trump	611	30.6%
Probably Republican Donald Trump	181	9.1%
<u>Democrat Joe Biden</u>	<u>775</u>	<u>38.8%</u>
Definitely Democrat Joe Biden	579	28.9%
Probably Democrat Joe Biden	196	9.8%
<u>Independent Robert F. Kennedy, Jr.</u>	<u>246</u>	<u>12.3%</u>
Definitely Independent Robert F. Kennedy, Jr.	100	5.0%
Probably Independent Robert F. Kennedy, Jr.	146	7.3%



Undecided	186	9.3%
Total	2000	100.0%

Switching gears and talking about other issues in the United States...

Hunter Investigation Awareness

13. How aware were you that Joe Biden's son, Hunter Biden, has been under investigation for potential crimes related to his taxes, lobbying activities, possible money laundering, and other matters?

	Freq.	%
<u>Aware</u>	<u>1741</u>	<u>87.1%</u>
Very aware	1141	57.1%
Somewhat aware	600	30.0%
<u>Unaware</u>	<u>210</u>	<u>10.5%</u>
Somewhat unaware	107	5.3%
Very unaware	104	5.2%
Unsure	49	2.4%
Total	2000	100.0%

Biden Involvement

14. Based on what you have heard or read, do you think Joe Biden while serving as Vice President did or did not have involvement in his son Hunter Biden's business dealings in Ukraine and China?

	Freq.	%
<u>Yes, Joe Biden was involved</u>	<u>1018</u>	<u>50.9%</u>
Definitely yes, Joe Biden was involved	663	33.1%
Probably yes, Joe Biden was involved	355	17.7%
<u>No, Joe Biden was not involved</u>	<u>715</u>	<u>35.8%</u>
Probably no, Joe Biden was not involved	367	18.3%
Definitely no, Joe Biden was not involved	349	17.4%
Unsure	267	13.3%
Total	2000	100.0%

Biden Appropriate

15. Given what you know about the Hunter Biden investigation, do you think President Joe Biden has acted appropriately or inappropriately regarding the investigation into his son, Hunter Biden?

	Freq.	%
<u>Appropriately</u>	<u>812</u>	<u>40.6%</u>
Very appropriately	484	24.2%
Somewhat appropriately	328	16.4%



<u>Inappropriately</u>	904	45.2%
Somewhat inappropriately	270	13.5%
Very inappropriately	633	31.7%
Unsure	285	14.2%
Total	2000	100.0%

FTC Amazon Lawsuit

16. The federal government via the Federal Trade Commission has sued Amazon, alleging that Amazon holds a monopoly and uses its powers to harm consumers and competitors, especially companies that sell on Amazon’s platforms. Amazon says that it has lowered prices for consumers and faces stiff competition from companies like Wal-Mart, Target, and Google, and therefore does not hold a monopoly.

Do you tend to side with Amazon or the Federal Trade Commission?

	Freq.	%
<u>Amazon</u>	989	49.4%
Definitely Amazon	389	19.4%
Probably Amazon	600	30.0%
<u>Federal Trade Commission</u>	622	31.1%
Probably the Federal Trade Commission	371	18.5%
Definitely the Federal Trade Commission	251	12.6%
Undecided	390	19.5%
Total	2000	100.0%

Thinking about the auto workers strike...

Initial UAW Strike Support

17. The 2023 United Auto Workers (UAW) strike is an ongoing labor strike involving automobile workers in the labor union United Auto Workers and the three unionized automakers in the United States—Ford Motor Company, General Motors, and Stellantis.

Do you support or oppose the workers’ strike led by the UAW union?

	Freq.	%
<u>Support</u>	1031	51.6%
Strongly support	510	25.5%
Somewhat support	521	26.0%
<u>Neither support nor oppose</u>	384	19.2%
<u>Oppose</u>	399	19.9%
Somewhat oppose	198	9.9%
Strongly oppose	200	10.0%



Unsure	186	9.3%
Total	2000	100.0%

UAW Workers Support

18. Regardless of how you feel about the strike, do you support or oppose the workers themselves who are participating in the strike?

	Freq.	%
<u>Support</u>	<u>1231</u>	<u>61.6%</u>
Strongly support	656	32.8%
Somewhat support	575	28.8%
<u>Neither support nor oppose</u>	<u>348</u>	<u>17.4%</u>
<u>Oppose</u>	<u>283</u>	<u>14.2%</u>
Somewhat oppose	157	7.8%
Strongly oppose	127	6.3%
Unsure	137	6.8%
Total	2000	100.0%

UAW Union Support

19. Regardless of how you feel about the strike, do you support or oppose the UAW Union itself in leading the strike?

	Freq.	%
<u>Support</u>	<u>867</u>	<u>43.4%</u>
Strongly support	452	22.6%
Somewhat support	415	20.8%
<u>Neither support nor oppose</u>	<u>451</u>	<u>22.5%</u>
<u>Oppose</u>	<u>510</u>	<u>25.5%</u>
Somewhat oppose	254	12.7%
Strongly oppose	256	12.8%
Unsure	171	8.6%
Total	2000	100.0%

Informed UAW Strike Support

20. The UAW is a labor union representing hundreds of thousands of automobile workers in the United States. A strike began when contract negotiations with three of the biggest American automakers, Ford Motor Company, General Motors, and Stellantis, broke down and the deadline to renew the contracts passed. The UAW union is striking because the automakers have so far refused several changes requested by the union, including a 40% pay increase (the same pay increase the automaker CEOs received), increased retirement benefits, the restoration of cost-of-living pay adjustments, and other concessions.



The automakers argue that they face stiff competition from non-union car companies like Tesla and Rivian and that caving to the union's excessive demands will damage their ability to compete.

Now knowing this information, do you support or oppose the workers' strike led by the UAW union?

	Freq.	%
<u>Support</u>	<u>1037</u>	<u>51.8%</u>
Strongly support	557	27.8%
Somewhat support	480	24.0%
<u>Neither support nor oppose</u>	<u>352</u>	<u>17.6%</u>
<u>Oppose</u>	<u>463</u>	<u>23.1%</u>
Somewhat oppose	259	13.0%
Strongly oppose	204	10.2%
Unsure	148	7.4%
Total	2000	100.0%

Party – Extreme

21. Which political party in the United States do you consider to be more extreme?

	Oct '23	Sep '23	Aug '23	Jun '23
<u>Republican Party</u>	<u>42.4%</u>	<u>39.2%</u>	<u>41.6%</u>	<u>40.6%</u>
Definitely the Republican Party	31.1%	29.1%	31.4%	32.2%
Probably the Republican Party	11.2%	10.1%	10.3%	8.5%
<u>Democratic Party</u>	<u>45.7%</u>	<u>44.9%</u>	<u>42.7%</u>	<u>44.3%</u>
Probably the Democratic Party	11.6%	9.3%	9.5%	9.6%
Definitely the Democratic Party	34.1%	35.6%	33.2%	34.7%
<u>Neither Party</u>	<u>5.1%</u>	<u>6.8%</u>	<u>6.6%</u>	<u>5.8%</u>
Unsure	6.8%	9.1%	9.1%	9.3%
Total	100.0%	100.0%	100.0%	100.0%

Thinking now about federal government funding...

Government Shutdown

22. Without Congress passing legislation to fund the government, the federal government would be unable to pay federal employees and fund agencies, causing a government shutdown. Congress recently passed a bipartisan stopgap funding measure to fund the government for an additional 45 days to avoid a shutdown as Congress works towards a bill that would fund the government for the whole year.

Do you support or oppose the recently passed stopgap funding measure?



	Freq.	%
<u>Support</u>	<u>1002</u>	<u>50.1%</u>
Strongly support	494	24.7%
Somewhat support	508	25.4%
<u>Neither support nor oppose</u>	<u>380</u>	<u>19.0%</u>
<u>Oppose</u>	<u>380</u>	<u>19.0%</u>
Somewhat oppose	224	11.2%
Strongly oppose	156	7.8%
Unsure	238	11.9%
Total	2000	100.0%

Now thinking about the child tax credit...

Child Tax Credit Preference

23. Over the past 30 years, both Republicans and Democrats have worked to cut taxes for families by expanding the child tax credit. In recent years, the child tax credit was expanded by Democrats to be more generous and to be given to those who are not working.

What would you like to see Congress do with the child tax credit?

	Freq.	%
Extend the Democrats' version of the child tax credit, which was more generous and expensive	455	22.7%
Expand the child tax credit but to focus more on working families, with less overall federal spending	821	41.1%
Do not expand the current child tax credit	453	22.7%
Unsure	271	13.6%
Total	2000	100.0%

Child Tax Credit Bipartisan Compromise

24. Congress is currently debating whether or not to temporarily expand the child tax credit, a policy aimed at cutting taxes for families with children. A bipartisan compromise is very unlikely to be as generous as the previous credit under the first two years of the Biden Administration. It is likely, however, to focus on providing lower income families with a more generous credit.

Would you support or oppose a bipartisan compromise?

	Freq.	%
<u>Support</u>	<u>919</u>	<u>46.0%</u>
Strongly support	378	18.9%
Somewhat support	541	27.1%



<u>Neither support nor oppose</u>	<u>409</u>	<u>20.5%</u>
<u>Oppose</u>	<u>411</u>	<u>20.6%</u>
Somewhat oppose	221	11.0%
Strongly oppose	191	9.5%
Unsure	260	13.0%
Total	2000	100.0%

Turning to more recent news...

Kelce-Swift Awareness

25. Travis Kelce, the tight end for the Kansas City Chiefs football team, and pop star Taylor Swift recently began dating, with their relationship being first showcased when Swift attended a Chiefs game with Kelce's family.

Before today, were you previously aware of the Kelce-Swift relationship?

	Freq.	%
Yes, I was already aware	1124	56.2%
No, I was not previously aware	737	36.9%
Unsure	139	6.9%
Total	2000	100.0%

Swiftly by Response

26. Do you consider yourself to be a Taylor Swift fan or "Swiftly"?

	Freq.	%
Yes	351	17.5%
No, but I like her music	796	39.8%
No, and I do not like her music	706	35.3%
Unsure	147	7.4%
Total	2000	100.0%

27. Are you female or male?

	Freq.	%
Female	1082	54.1%
Male	918	45.9%
Total	2000	100.0%

28. What age range do you fall within?

	Freq.	%
<u>Under 55</u>	<u>1050</u>	<u>52.5%</u>
18 - 29	264	13.2%
30 - 44	464	23.2%
45 - 54	322	16.1%



<u>55 and Over</u>	<u>950</u>	<u>47.5%</u>
55 - 64	372	18.6%
65+	578	28.9%
Total	2000	100.0%

29. Generally speaking, do you think of yourself as a Democrat, Republican, or Independent?

	Freq.	%
<u>Republican</u>	<u>767</u>	<u>38.4%</u>
Strongly Republican	401	20.0%
Mostly Republican	367	18.3%
<u>Independent</u>	<u>422</u>	<u>21.1%</u>
<u>Democratic</u>	<u>780</u>	<u>39.0%</u>
Mostly Democratic	333	16.7%
Strongly Democratic	447	22.3%
Unsure	30	1.5%
Total	2000	100.0%

30. And thinking about your views toward politics and government, would you say you are...

	Freq.	%
<u>Conservative</u>	<u>806</u>	<u>40.3%</u>
Very conservative	383	19.2%
Somewhat conservative	422	21.1%
<u>Moderate</u>	<u>655</u>	<u>32.8%</u>
<u>Liberal</u>	<u>500</u>	<u>25.0%</u>
Somewhat liberal	249	12.4%
Very liberal	251	12.6%
Unsure	39	2.0%
Total	2000	100.0%

31. Do you consider the area where you live to be more rural, suburban, or urban?

	Freq.	%
Rural	485	24.2%
Suburban	1055	52.8%
Urban	460	23.0%
Total	2000	100.0%

32. Are you the parent or legal guardian of a minor?

	Freq.	%
Yes	596	29.8%
No	1396	69.8%



Refused	8	0.4%
Total	2000	100.0%

33. If you have one, what is your religious affiliation?

	Freq.	%
Catholic	524	26.2%
Mainline Protestant (Methodist, Lutheran, Episcopal, Anglican, etc.)	340	17.0%
Evangelical or Born-Again (Baptist, Non-denominational Evangelical, Pentecostal, Church of God, etc.)	455	22.8%
Another religion	229	11.5%
Not religious	396	19.8%
Unsure	56	2.8%
Total	2000	100.0%

34. What is your employment status?

	Freq.	%
Employed	1025	51.3%
Unemployed but looking for work	116	5.8%
Unemployed and not looking for work	70	3.5%
Homemaker / stay-at-home parent	123	6.2%
Student	39	1.9%
Retired	616	30.8%
Unsure	11	0.5%
Total	2000	100.0%

35. What annual household income range do you fall within out of the following options?

	Freq.	%
Less than \$25,000	336	16.8%
\$25,000 - \$49,999	448	22.4%
\$50,000 - \$74,999	344	17.2%
\$75,000 - \$99,999	165	8.2%
\$100,000 - \$124,999	284	14.2%
\$125,000+	376	18.8%
Unsure	48	2.4%
Total	2000	100.0%

36. Which of the following best describes your race or ethnicity?

	Freq.	%
White or Caucasian	1472	73.6%
Asian or Pacific Islander	75	3.7%
Black or African American	246	12.3%
Hispanic or Latino	170	8.5%
Other	30	1.5%
Unsure	8	0.4%



Total	2000	100.0%
-------	------	--------

37. Thinking back, who did you vote for in the 2020 election for President?

	Freq.	%
Republican Donald Trump	874	43.7%
Democrat Joe Biden	916	45.8%
Another candidate	59	3.0%
Did not vote in 2020	125	6.2%
Unsure	26	1.3%
Total	2000	100.0%

38. How often do you vote in general elections held in November of each even year?

	Freq.	%
Every general election including for president and in midterms	1184	59.2%
Most general elections, including for president and in some midterms	475	23.8%
Every general election for president but not midterms	141	7.0%
Most general elections for president	200	10.0%
Total	2000	100.0%

39. What's the highest level of education you have completed?

	Freq.	%
No degree	1200	60.0%
Some high school	32	1.6%
High school diploma/GED	415	20.8%
Technical Certification	100	5.0%
Some college or Associate's Degree	653	32.7%
At least College	796	39.8%
Four-year undergraduate or Bachelor's Degree	468	23.4%
Graduate degree or further	328	16.4%
Unsure	4	0.2%
Total	2000	100.0%

40. Geo - Region

	Freq.	%
Midwest	448	22.4%
Northeast	358	17.9%
South	304	15.2%
Southwest	336	16.8%
West	420	21.0%



Mid-Atlantic	134	6.7%
Total	2000	100.0%

41. Age + Income

	Freq.	%
<55 <\$50k	378	18.9%
<55 \$50k-\$100k	264	13.2%
<55 \$100k+	390	19.5%
55+ <\$50k	406	20.3%
55+ \$50k-\$100k	245	12.2%
55+ \$100k+	270	13.5%
Unsure	48	2.4%
Total	2000	100.0%

42. Age + Gender

	Freq.	%
F 18 - 29	138	6.9%
F 30 - 44	254	12.7%
F 45 - 54	168	8.4%
F 55 - 64	204	10.2%
F 65+	318	15.9%
M 18 - 29	126	6.3%
M 30 - 44	210	10.5%
M 45 - 54	154	7.7%
M 55 - 64	168	8.4%
M 65+	259	13.0%
Total	2000	100.0%

43. Race + Gender

	Freq.	%
White Female	807	40.4%
White Male	665	33.2%
Asian Female	36	1.8%
Asian Male	39	1.9%
Black Female	97	4.9%
Black Male	149	7.4%
Hispanic Female	114	5.7%
Hispanic Male	56	2.8%
Other Female	24	1.2%
Other Male	5	0.3%
Unsure	8	0.4%
Total	2000	100.0%

44. Education + Gender

	Freq.	%
Female At least College	381	19.0%
Female No degree	700	35.0%



Male At least College	415	20.8%
Male No degree	500	25.0%
Unsure	4	0.2%
Total	2000	100.0%

METHODOLOGY

This probabilistic survey was conducted October 3 – 5, 2023, with 2000 likely general election voters. It has a margin of error of $\pm 2.16\%$. Known registered voters were interviewed via online panel. This survey was weighted to a likely general election voter universe.

ABOUT THE FIRM

[Cygnal](#) is an award-winning international polling, public opinion, and predictive analytics firm that pioneered multi-mode polling, text-to-web collection, and emotive analysis. Cygnal consistently ranks as the most accurate firm, and clients rely on Cygnal's ability to create intelligence for action. Its team members have worked in 48 states and multiple countries on more than 2,700 corporate, public affairs, and political campaigns.

